



King's High  
School

# TEACHING AT KING'S HIGH SCHOOL

# THE SCHOOL

## ABOUT KING'S HIGH

Our school has 140 years of proven experience and excellence in educating young women from the age of 11-18.

With an imminent relocation to our new Myton Road campus, where we join Warwick School and Warwick Preparatory School, there really is no better time to become a part of the school's ongoing success story.

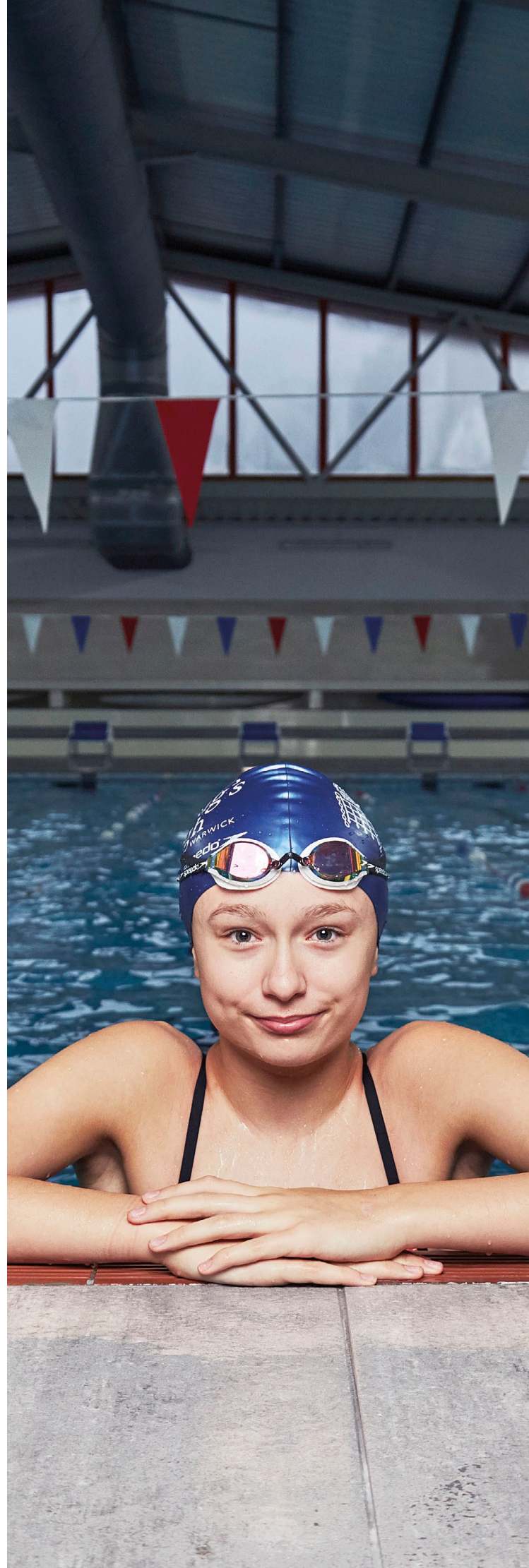
King's High is part of Warwick Independent Schools Foundation, which is the Governing Body for our two schools – King's High School with Warwick Preparatory School, and Warwick School.

The schools aim to provide outstanding, all-round education that helps each pupil to maximise their potential. With the **best A Level results in Warwickshire for 2018** and with proven excellence across academic and co-curricular pursuits, King's High is highly regarded by catchment families and is considered a top choice. We currently have around 650 girls attending the school.

We believe that our girls and the boys at Warwick School obtain the best of both worlds, being educated in a single-sex environment while reaping co-educational benefits from our many and close links. Together, we offer a range of extracurricular activities and run a Friday Afternoon joint activities programme for pupils in Year 9 and above. We regularly stage joint music and drama productions, run joint trips, and share staff and facilities.

As one school from 3-18, we enjoy close ties with Warwick Preparatory School, with two whole-school faculties for Music and Sport, and a 'STEAM' co-ordinator. We undertake many activities together, across a wide range of disciplines.

The collaboration between the schools will extend yet further as part of Project One Campus, which will bring all pupils in the Foundation together on the Myton Road campus, with King's High moving from its Smith Street location to new purpose built school buildings, joining Warwick School and Warwick Prep School in 2019. The project will be completed for September 2020.



# ETHOS, MISSIONS & AIMS

## MISSION

We place great emphasis on a broad and inclusive education, in a nurturing and supportive environment, whilst striving for excellence in all that we do.

In celebrating each girl for the unique qualities she brings to our community, we encourage her to explore and develop her interests, gain confidence in herself and in her abilities, and seize the rich opportunities life offers.

We seek to prepare all our girls for a life of learning and fulfilment, and for the fast-changing world of the 21st century as responsible, active, and compassionate global citizens.

Throughout their lives, we encourage our girls to 'Aspire, Achieve, Enjoy'.

## STATEMENT OF RELIGIOUS ETHOS

Founded on Christian principles, we welcome pupils of all faiths and none. King's High School and Warwick Preparatory School are committed to enhancing the contribution we can make to society as a whole, and, in embracing diversity, to equal opportunities for all.

## AIMS



**Scholarship:** To foster a love of learning, intellectual curiosity, independence of thought, and effective learning habits.



**Environment:** To provide a safe, stimulating and supportive school environment, where each pupil can feel inspired, challenged and valued.



**Community:** To foster a vibrant school community, built on trust and respect, and instil a sense of social responsibility.



**Character:** To develop resilience and confidence, and to inculcate integrity.



**Opportunity:** To provide a rich and stimulating school experience, where our pupils can explore and develop their interests, gifts and talents, and discover new ones.

“King’s High is carefully crafting a heady brew for the girls of absolutely top academic aspirations, endless opportunities to develop passions outside of the classroom and a focus on actions that will ground them in the real, inclusive world.”

**THE GOOD SCHOOLS GUIDE 2018**

---

“Results in A Level examinations and standardised measures of progress indicate that pupils make excellent progress by the time they leave school compared to the average for pupils of similar abilities.”

**ISI INSPECTION REPORT 2017**

---

“If anyone doubts that girls’ schools are the catalyst for gradual but determined social revolution, they should come to King’s High. At the heart of a relatively conservative area is this dynamic powerhouse for social change, unleashing on the quiet byways of Warwickshire the full force of young women who know what they want the world to look like and how to go about getting it there. There’s a careful and not sensational development of confidence and leadership, a respect for serious academic thought and analysis that is not showy or judged by solely A\*s.”

**THE GOOD SCHOOLS GUIDE 2018**

---

“Pastoral care is regarded as a great strength, and whoever you talk to, there is a sense that every girl is known as an individual within the school.”

**THE GOOD SCHOOLS GUIDE 2018**

---

“Pupils’ exceptional achievements cross a very wide range of academic, creative and sporting activities.”

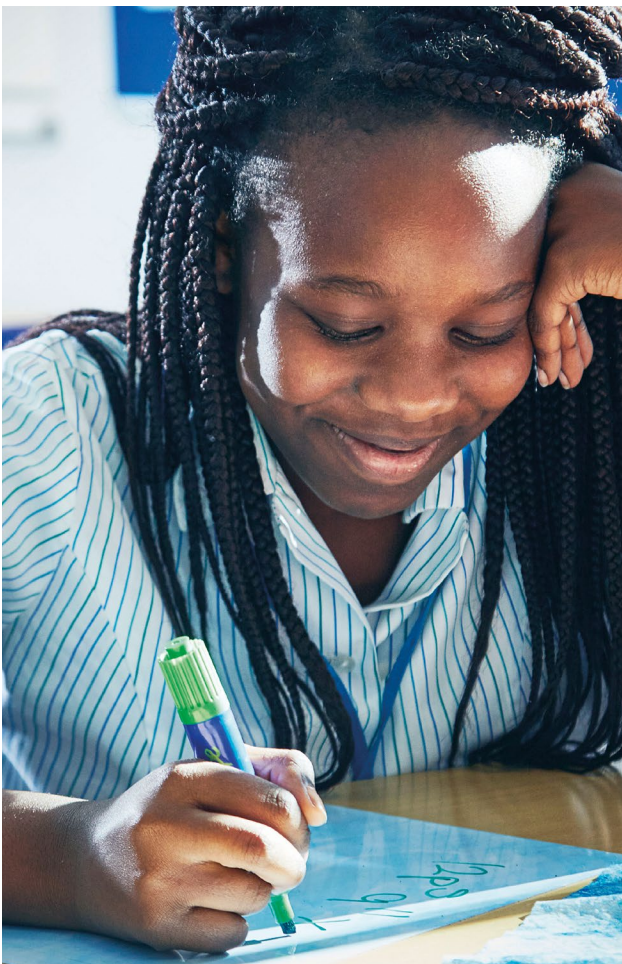
**MOST RECENT ISI INSPECTION REPORT 2017**

# BENEFITS OF WORKING AT KING'S HIGH SCHOOL

The Warwick Independent Schools Foundation salary scale for Teaching Staff offers competitive rates of pay, which exceed those offered in the state sector. All employees are members of the Employee Assistance Programme which provides 24 hour support for the employee and their immediate family members with telephone helplines, cognitive behavioural therapy, critical incident advice and online support on a range of legal and emotional issues. Significant concessionary school fees are available to all permanent members of the teaching staff, subject to their children meeting the academic entry requirements, and a place being available.

New staff are allocated a buddy who meets with them on a regular basis in the first year to ensure all queries and concerns are answered.

- NQTs are fully supported with a bespoke programme and have a subject mentor as well as a school NQT supervisor.
- A wide ranging and extensive co-curricular programme, with teaching and non-teaching staff encouraged to get involved.
- Excellent working environment: dedicated staff working areas in all departments, extensive ICT facilities, ICT support and training.
- Small class sizes, high levels of pastoral care and parental support.
- Generous timetable allowances for teaching staff.
- All staff are included in a pension scheme. Teachers are automatically enrolled into the Teachers' Pension Scheme and non-teaching staff are enrolled with an alternative occupational pension provider.
- Staff well-being opportunities including yoga, mindfulness and free access to the Foundation's sports facilities and use of the well-resourced school library.
- 'Restaurant quality' school lunch is provided free of charge for all staff, with any dietary requirements met, and evening meals where required.
- Staff are part of a lively, active Common Room.



# WHAT OUR STAFF SAY



Moving from the maintained sector, King's High has been my first role at an independent school. Put simply, the girls are fabulous: bright, engaged and inquisitive about the world around them. The staff body is equally impressive. Teachers here are hardworking professionals, but also incredibly friendly and will go out of their way to provide support to their colleagues. The school is very well resourced, and there are opportunities to get involved with a seemingly endless list of co-curricular activities. Whilst it is a cliché, I learn new things every day, and every day truly is unique. Three years down the line, I wouldn't change a thing about my time here. Taking a job at King's was the single best decision that I have made in my working life.

**MR PHIL MCCORQUODALE – HEAD OF BIOLOGY**



The main reason I love teaching at King's is the students. It is a pleasure to teach every one of my classes; the girls are enthusiastic, ready to learn and ask thoughtful questions. Outside the classroom, I am part of a vibrant and collaborative department where everyone works together, sharing resources and best practice. I enjoy taking part in school trips and last autumn accompanied the French department on their trip to Paris. I have also been given opportunities to further my career through becoming a higher education and Oxbridge advisor and helping the girls achieve their goals is incredibly rewarding.

**MRS SOPHIE SHAW – MATHS TEACHER**



King's manages to be both high-achieving and down to earth. Teaching here offers the opportunity to work with ambitious, hard-working, enthusiastic girls, but also to be part of a community that is consistently concerned with the all round well-being of our students. It's a remarkable and unusual combination, and makes for a deeply rewarding teaching experience.

**DR PHIL SEAL – 2ND IN ENGLISH AND HEAD OF ACADEMIC ENRICHMENT**



I have really enjoyed coming to work at King's for a variety of reasons but what stands out most to me is the friendliness of the pupils and staff. In the classroom the pupils are interested and hardworking and outside of the classroom they are involved in so many different activities. They are very engaging to chat with as they have interests in such diverse areas. As a new member of staff I felt a great deal of support from my new colleagues. People have time to help you and are happy to answer all the questions a new member of staff has.

**MS SUSAN OSTRANDER – PSYCHOLOGY TEACHER**



I am incredibly privileged to work in such a unique school. Teaching here at King's High is more than delivering knowledge and expertise, I am able to share and facilitate creative opportunities from which the girls independently investigate and explore. It is a hugely rewarding place to be and every day brings a new set of opportunities. The girls are incredibly driven, as am I, and together we work as a team striving for the best creative experience possible.

**MS SARAH JORDAN – DIRECTOR OF ART**



It's the girls that make King's. They are engaging and enjoyable to work with; it's fantastic to work in an environment where everyone is so willing and keen to learn. There is a real spirit amongst them, one that shines through from the very first moment you meet them.

**MR JOHN WOOD – HEAD OF DEPARTMENT  
ECONOMICS AND BUSINESS STUDIES**



Being one of the longest serving members of staff and having taught at King's for 20 years, no two days being the same, I'm still amazed by all the girls accomplish and it's great to now be able to encourage the next generation of teachers to embark on this most exciting of careers through the NMAPS teacher training programme, which is one of the routes into teaching at King's.

**MRS ROSEMARY CHAPMAN – DIRECTOR OF NMAPS  
WARWICK REGIONAL HUB**

# SUPPORTING YOUR PROFESSIONAL DEVELOPMENT

Whether new to the school or an established member of staff, at King's we are committed to a programme of professional development that will enrich you as a classroom practitioner and provide opportunities that will enhance career aspirations.

- All new staff are allocated a buddy who meets with them on a regular basis in the first year to ensure all queries and concerns are answered. In addition, we offer a comprehensive induction programme allowing you to familiarise yourself with the different aspects and nuances of teaching at King's.
- For staff without QTS there is a bespoke programme for suitably qualified individuals leading to recognised professional status. You will have a mentor with whom you will work to develop subject expertise and educational pedagogy.
- For Newly Qualified Teachers, we offer a full bespoke programme of support and training with appropriate timetable reduction as you establish yourself in the teaching profession, including a subject mentor as well as a school NQT supervisor.
- Opportunities to attend a wide variety of fully funded external courses.
- Opportunities for undertaking further qualifications such as The Independent Schools Qualification in Middle Management (Academic or Pastoral), or a Masters degree.
- A culture of discussing teaching and learning through informal INSET.
- Access to the Partnership Plus action research forum – a collaborative project with colleagues in a number of local maintained secondary schools.
- The opportunity to be a part of a recognised school of excellence for delivering teaching training.
- King's High is delighted that in conjunction with Warwick School they are leading one of the regional hubs for the delivery of the DfE's National Mathematics and Physics School Centre Initial Teacher Training programme.
- Hosting of PGCE placements in conjunction with local Teaching School alliances.



# OVER 130

CLUBS AND SOCIETIES

---

**650+**  
STUDENTS

**#1**

FOR A LEVEL  
RESULTS IN  
WARWICKSHIRE 2018

---

**STRONG PARTICIPATION IN  
MUSICAL ENSEMBLES AND  
PERFORMANCES**

---

**REPRESENTATION  
ACROSS A NUMBER  
OF SPORTING  
DISCIPLINES, WITH  
REPRESENTATION  
AT SCHOOL, COUNTY  
AND NATIONAL LEVEL.**

  
THE SUNDAY TIMES

**SCHOOLS  
GUIDE  
2019**

---

**WEST MIDLANDS  
INDEPENDENT  
SECONDARY  
SCHOOL  
OF THE YEAR**

# ABOUT WARWICKSHIRE

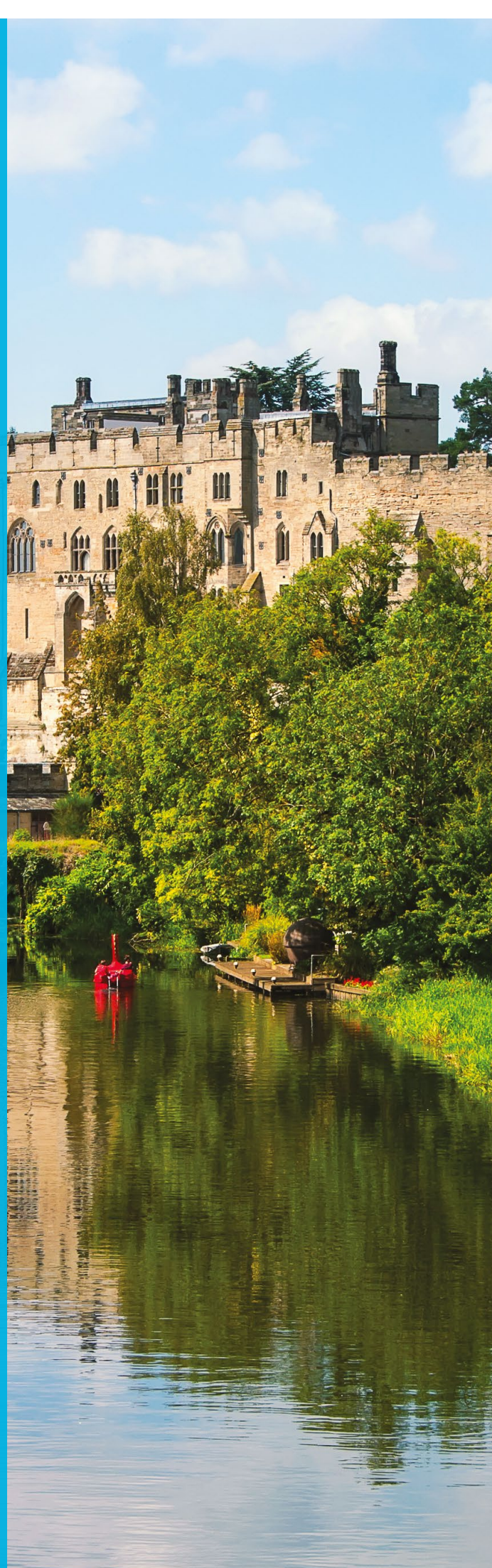
## Why work in Warwick or move to the area?

Warwick is the County Town and sits on the banks of the beautiful River Avon. It combines medieval history and architectural wealth with a modern vibrancy rich in bars, restaurants and culture. There are also many great places to live nearby. Close neighbour, Leamington Spa, was recently named as one of the best places to live in the Midlands in 2017 by the Sunday Times and also 'the Happiest Place to Live in the UK' in a recent survey by Right Move. Leamington was voted Best Place to Live in the UK in 2017 (BBC News, 2017) Solihull, Stratford-upon-Avon, Coventry and Birmingham are also close by and easily reached by train.

In Birmingham, you will find the Symphony Hall, Arena Birmingham and National Exhibition Centre. The city has many fine museums and galleries, excellent shopping and evening entertainment, and is a major centre for sport, hosting the Commonwealth Games in 2022. For theatre lovers, Stratford-upon-Avon is only eight miles away; it also offers various other attractions.

In addition, the excellent Warwick Arts Centre on Warwick University campus is just ten miles away and has a range of facilities providing events throughout the year. Warwick itself has an annual literary festival; in recent years, a number of events have been held within both King's High School and Warwick School.

Nearby Coventry has been named UK City of Culture 2021. If you enjoy outdoor pursuits or a more tranquil experience, the Cotswolds is within easy reach. Road and rail links are exceptional. There are mainline train stations in Warwick, at Warwick Parkway, just outside town, and at Leamington Spa with the Chiltern Line providing a good service to London Marylebone and Birmingham. London is less than an hour and a half away by train, and Birmingham has its own international airport. Within Warwick, Leamington Spa and the surrounding areas, there is also an excellent choice of schools, both private and maintained at all levels.





# APPLICATIONS

Applications to:

**[hr@warwickschools.co.uk](mailto:hr@warwickschools.co.uk)**

This School is committed to safeguarding and promoting the welfare of children and expects all staff and volunteers to share this commitment. All appointments are subject to a satisfactory enhanced DBS check.









Head Master:  
Mr R Nicholson MA Oxon  
King's High School  
Smith Street  
Warwick CV34 4HJ

01926 494 485  
[enquiries@kingshighwarwick.co.uk](mailto:enquiries@kingshighwarwick.co.uk)  
[www.kingshighwarwick.co.uk](http://www.kingshighwarwick.co.uk)

 @KHSWarwick  @Kingshighwarwick  kingshigschoolwarwick



King's High  
School